

**PCGF6 Antibody (Center)**  
**Purified Rabbit Polyclonal Antibody (Pab)**  
**Catalog # AP21285c**

**Specification**

---

**PCGF6 Antibody (Center) - Product Information**

Application	WB,E
Primary Accession	<a href="#">Q9BYE7</a>
Reactivity	Rat
Host	Rabbit
Clonality	polyclonal
Isotype	Rabbit IgG
Calculated MW	39047
Antigen Region	215-249

**PCGF6 Antibody (Center) - Additional Information**

**Gene ID** 84108

**Other Names**

Polycomb group RING finger protein 6, Mel18 and Bmi1-like RING finger, RING finger protein 134, PCGF6, MBLR, RNF134

**Target/Specificity**

This PCGF6 antibody is generated from a rabbit immunized with a KLH conjugated synthetic peptide between 215-249 amino acids from the Central region of human PCGF6.

**Dilution**

WB~~1:2000

E~~Use at an assay dependent concentration.

**Format**

Purified polyclonal antibody supplied in PBS with 0.09% (W/V) sodium azide. This antibody is purified through a protein A column, followed by peptide affinity purification.

**Storage**

Maintain refrigerated at 2-8°C for up to 2 weeks. For long term storage store at -20°C in small aliquots to prevent freeze-thaw cycles.

**Precautions**

PCGF6 Antibody (Center) is for research use only and not for use in diagnostic or therapeutic procedures.

**PCGF6 Antibody (Center) - Protein Information**

**Name** PCGF6

**Synonyms** MBLR, RNF134

**Function** Transcriptional repressor (PubMed:[12167161](#)). May modulate the levels of histone H3K4Me3 by activating KDM5D histone demethylase (PubMed:[17320162](#)). Component of a Polycomb group (PcG) multiprotein PRC1-like complex, a complex class required to maintain the transcriptionally repressive state of many genes, including Hox genes, throughout development. PcG PRC1 complex acts via chromatin remodeling and modification of histones; it mediates monoubiquitination of histone H2A 'Lys-119', rendering chromatin heritably changed in its expressibility (PubMed:[12167161](#)). Within the PRC1-like complex, regulates RNF2 ubiquitin ligase activity (PubMed:[26151332](#)).

**Cellular Location**

Nucleus

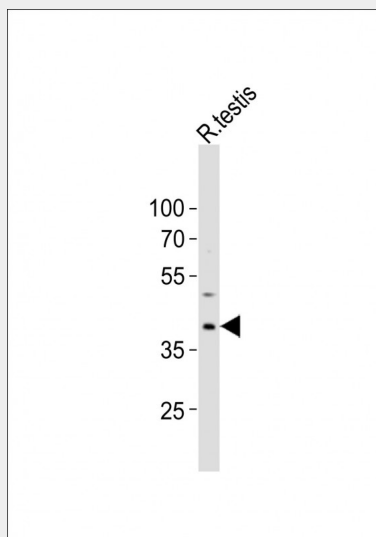
**Tissue Location**

Ubiquitous.

**PCGF6 Antibody (Center) - Protocols**

Provided below are standard protocols that you may find useful for product applications.

- [Western Blot](#)
- [Blocking Peptides](#)
- [Dot Blot](#)
- [Immunohistochemistry](#)
- [Immunofluorescence](#)
- [Immunoprecipitation](#)
- [Flow Cytometry](#)
- [Cell Culture](#)

**PCGF6 Antibody (Center) - Images**

Anti-PCGF6 Antibody (Center) at 1:2000 dilution + rat testis lysates. Lysates/proteins at 20 µg per lane. Secondary Goat Anti-Rabbit IgG, (H+L), Peroxidase conjugated at 1/10000 dilution. Predicted band size : 39 kDa. Blocking/Dilution buffer: 5% NFDM/TBST.

**PCGF6 Antibody (Center) - Background**

Transcriptional repressor. May modulate the levels of histone H3K4Me3 by activating KDM5D

histone demethylase. Component of a Polycomb group (PcG) multiprotein PRC1-like complex, a complex class required to maintain the transcriptionally repressive state of many genes, including Hox genes, throughout development. PcG PRC1 complex acts via chromatin remodeling and modification of histones; it mediates monoubiquitination of histone H2A 'Lys-119', rendering chromatin heritably changed in its expressibility.

#### **PCGF6 Antibody (Center) - References**

Akasaka T.,et al.Genes Cells 7:835-850(2002).  
Ota T.,et al.Nat. Genet. 36:40-45(2004).  
Deloukas P.,et al.Nature 429:375-381(2004).  
Lee M.G.,et al.Cell 128:877-887(2007).  
Maertens G.N.,et al.PLoS ONE 4:E6380-E6380(2009).